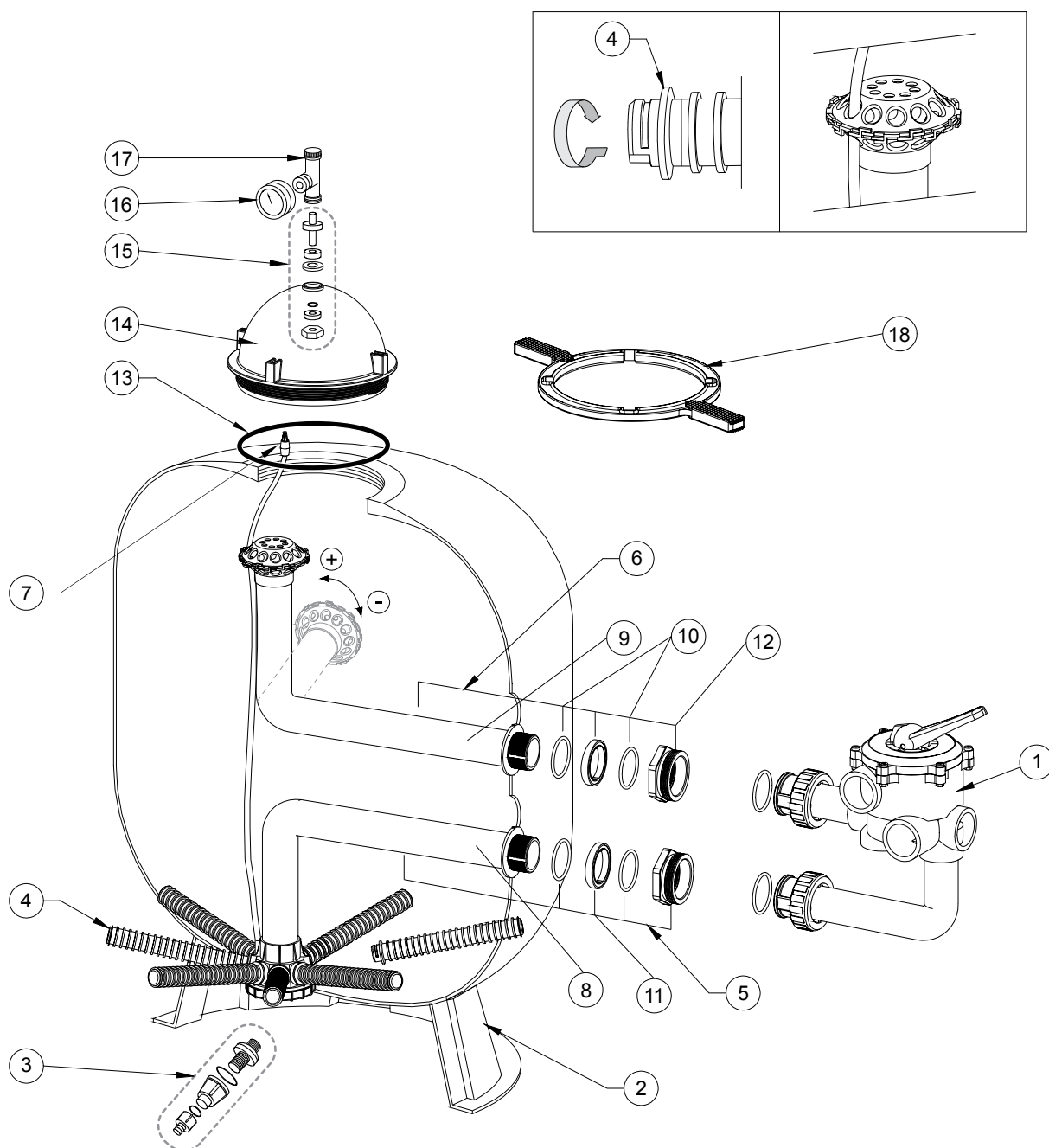


## TRITON® / TRITON II



# TRITON<sup>®</sup> / TRITON<sup>®</sup> II CLEARPRO

## Replacement Parts

No.	Part No.	Description	Part No. Includes
1**	RE261070ND	Valve 1 1/2" 6-Way (for 19" & 24")	1
	RE261071ND	Valve 2" 6-Way (for 30" & 36")	1
2	RBASEUNI1	Base (19" & 24")	1
	RBASEUNI2	Base (30" & 36")	1
3	R154696	Drain Kit High Flow	1
4	R301904	Lateral 19"	1*
	R302404	Lateral 24"	1*
	R303004	Lateral 30"	1*
	R303604	Lateral 36"	1*
	R301904CP	Lateral Clear Pro 19"	1*
	R302404CP	Lateral Clear Pro 24"	1*
	R303004CP	Lateral Clear Pro 30"	1*
	R303604CP	Lateral Clear Pro 36"	1*
5	G-30-1905	Bottom Diffuser System 19" (incl.8,10,11,12)	1
	G-30-2405	Bottom Diffuser System 24" (incl.8,10,11,12)	1
	G-30-3005	Bottom Diffuser System 30" (incl.8,10,11,12)	1
	G-30-3605	Bottom Diffuser System 36" (incl.8,10,11,12)	1
	G-30-1905CP	Bottom Diff. Sys.19" Clear Pro (incl.8,10,11,12)	1
	G-30-2405CP	Bottom Diff. Sys.24" Clear Pro (incl.8,10,11,12)	1
	G-30-3005CP	Bottom Diff. Sys.30" Clear Pro (incl.8,10,11,12)	1
	G-30-3605CP	Bottom Diff. Sys.36" Clear Pro (incl.8,10,11,12)	1
6	G-30-1906	Top Diffuser System 19" (incl.9,10,11,12)	1
	G-30-2406	Top Diffuser System 24" (incl.9,10,11,12)	1
	G-30-3006	Top Diffuser System 30" (incl.9,10,11,12)	1
	G-30-3606	Top Diffuser System 36" (incl.9,10,11,12)	1
7	RTTAIR	Air Relief Strainer	1
8	G-30-1908	Bottom Pipe and Hub Set 19"	1
	G-30-2408	Bottom Pipe and Hub Set 24"	1
	G-30-3008	Bottom Pipe and Hub Set 30"	1
	G-30-3608	Bottom Pipe and Hub Set 36"	1
	G-30-1908CP	Bottom Pipe and Hub Set 19" Clear Pro	1
	G-30-2408CP	Bottom Pipe and Hub Set 24" Clear Pro	1
	G-30-3008CP	Bottom Pipe and Hub Set 30" Clear Pro	1
	G-30-3608CP	Bottom Pipe and Hub Set 36" Clear Pro	1
9	G-30-1909	Top Pipe and Diffuser Set 19"	1
	G-30-2409	Top Pipe and Diffuser Set 24"	1
	G-30-3009	Top Pipe and Diffuser Set 30"	1
	G-30-3609	Top Pipe and Diffuser Set 36"	1
10	R154492	O-Ring	2
11	RTTADR	External Adjusting Ring	2
12	RTTBHD	Bulkhead	2
13	R152501W	O-Ring	1
14	R152500	8 1/2" Closure Dome	1
15	R154687	Adaptor Piece in brass	1
16	R152046	Manometer - Pressure Gauge (Back Connection)	1
17	R154689	Manual Plastic Air Bleed Valve	1
18	R154513	Wrench for 8 1/2" Closure Dome	1
	G-15-4600	Closure Kit (incl.13, 14, 15, 16 & 17)	
	RWRENCHTT	Metal Wrench for bulkheads	1

\* ONE FILTER REQUIRES 8 PIECES

\*\* SEE VALVE SHEET FOR VALVE SPARE PARTS