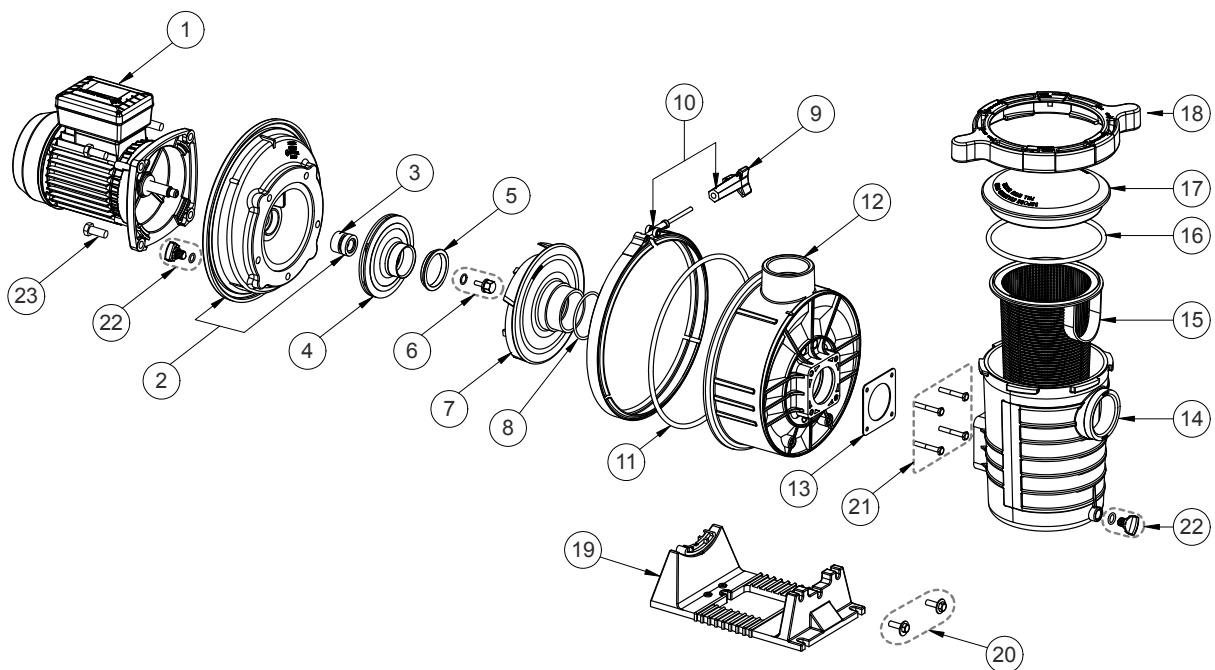


## ULTRA-GLAS™ - S5P3R™ SERIES



## ULTRA-GLAS™ - S5P3R

### Replacement Parts

No.	Part No.	Description	Part No. Includes*
1**	RA-SD1	Motor - Mono Phase 0,55kW	1
	RA-SD3	Motor - Tri Phase 0,55kW	1
	RA-SE1	Motor - Mono Phase 0,75kW	1
	RA-SE3E2	Motor - Tri Phase 0,75kW	1
	RA-SF1	Motor - Mono Phase 1,10kW	1
	RA-SF3E2	Motor - Tri Phase 1,10kW	1
	RA-SG1	Motor - Mono Phase 1,50kW	1
	RA-SG3E2	Motor - Tri Phase 1,50kW	1
	RA-SH1	Motor - Mono Phase 2,20kW	1
	RA-SH3E2	Motor - Tri Phase 2,20kW	1
2	R39004910	Seal plate incl. Mechanical Seal	1
3	R354545SP	Mechanical Seal	1
4	R39005000	Impeller 0,55KW	1
	R39005100	Impeller 0,75KW	1
	R39005300	Impeller 1,10KW	1
	R39005400	Impeller 1,50KW	1
	R39010400	Impeller 2,20KW	1
5	R39006900	Wear Ring (0,55KW - 1,50KW)	1
6	R39009900	Impeller Lock Screw & O-Ring	1
7	R39005500	Diffuser 0,55KW - 1,10KW	1
	R39015500	Diffuser 1,50KW - 2,20KW	1
8	R39006600	Seal Diffuser	1
9	RWC3622	Knob for Clamp	1
10	RC1937A	Clamp Assembly	1
11	R39006000	O-Ring	1
12	R39007002	Volute	1
13	R39501200	Square Gasket	1
14	R39017102	Strainer Pot	1
15	R39303500	Basket	1
16	R39300600	O-Ring	1
17	R39301799	Lid	1
18	R39105000	Locking Ring	1
19	R39005800	Base 0,55KW - 1,50KW	1
	R390058MA	Base 2,20KW	1
20	R98219800	Bolts & Washers	2
21	R070979	Bolts	4
22	R98207700	Drain Plug & O-Ring	2
23	R354290	Bolt Set	4
	P-UFL-OSET	Seal Set (Partn° 3, 5, 8, 11, 13, 16)	

\* PART NUMBER INCLUDES REQUIRED QUANTITY PER PRODUCT

\*\* SEE MOTOR SHEET FOR MOTOR SPARE PARTS