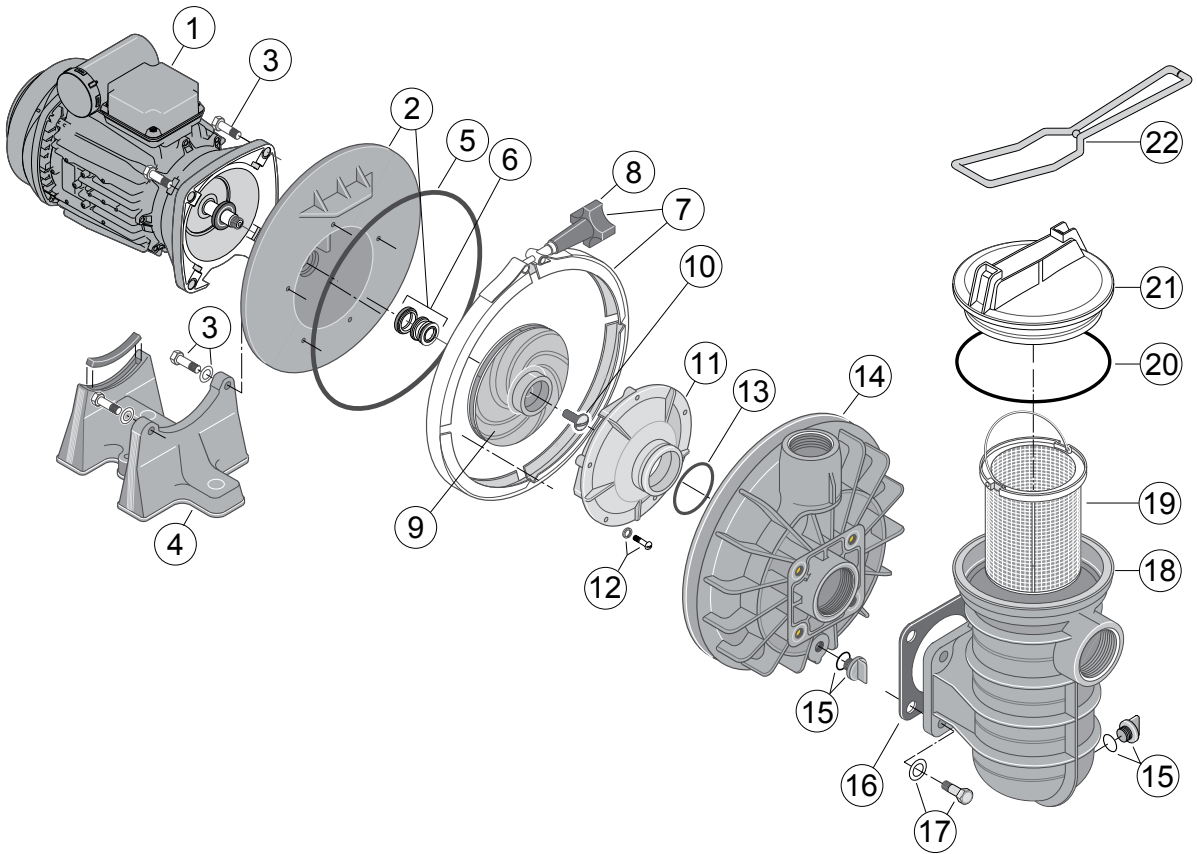


5P2R™



5P2R™ Replacement Parts

No.	Part No.	Description	Part No. Includes*
1**	RA-C1	Motor - Mono Phase 0,37KW	1
	RA-C3	Motor - Tri Phase 0,37KW	1
	RA-D1	Motor - Mono Phase 0,55KW	1
	RA-D3	Motor - Tri Phase 0,55KW	1
	RA-E1	Motor - Mono Phase 0,75KW	1
	RA-E3E2	Motor - Tri Phase 0,75KW	1
	RA-F1	Motor - Mono Phase 1,10KW	1
	RA-F3E2	Motor - Tri Phase 1,10KW	1
	2	RC103193P	Seal Plate incl. Mechanical Seal
3	RU3074SS	Bolts	4
4	RC442P	Base (0,25KW -> 0,55KW)	1
	RC441P	Base (0,75KW -> 1,10KW)	1
5	R39006000	O-Ring	1
6	R173040100S	Mechanical Seal (for pumps manufactured after April 2009)	1
	RU10993SS	Mechanical Seal (for pumps manufactured before April 2009)	1
7	RC1937A	Clamp and knob Assembly	1
8	RWC3622	Clamp Knob	1
9	RC10592B1	Impeller 0,25KW Mono Phase	1
	RC10592B3	Impeller 0,25KW Tri Phase	1
	RC10592C1	Impeller 0,37KW Mono Phase	1
	RC10592C3	Impeller 0,37KW Tri Phase	1
	RC105138D1	Impeller 0,55KW Mono Phase	1
	RC105138D3	Impeller 0,55KW Tri Phase	1
	RC105137E1	Impeller 0,75KW Mono Phase	1
	RC105137E3	Impeller 0,75KW Tri Phase	1
	RC105137F1	Impeller 1,10KW Mono Phase	1
RC105137F3	Impeller 1,10KW Tri Phase	1	
10***	RC3012	Impeller Lock Screw	1
11	RC1216P	Diffuser (0,25KW -> 0,37KW)	1
	RC1200PA	Diffuser (0,55KW -> 1,10KW)	1
12	RU30542SS	Bolts & Washers	3
13	RU9226	O-Ring	1
14	RC17647P1W	Volute	1
15	RU178920P	Drain Plug	2
16	RC20123	Square Gasket	1
17	RU3064SS	Bolts & Washers	4
18	RC15353P1W	Strainer Pot	1
19	RC10833P	Basket	1
20	RU9229	O-Ring	1
21	RC3139P1	Lid	1
22	RU7911	Wrench for Lid	1
	RC25353P1W	Pre-Filter (Partn° 15, 18, 19, 20, 21)	
	PP1000	Seal Set (Partn° 5, 6, 13, 16, 20) For pumps with serialn° lower then 091060000 - Sealplate with heatsink	
	PP1000S	Seal Set (PN's 5, 6, 13, 16, 20) For pumps with serialn° larger then 091060000 - Sealplate without heatsink	

* PART NUMBER INCLUDES REQUIRED QUANTITY PER PRODUCT

** SEE MOTOR SHEET FOR MOTOR SPARE PARTS

*** IMPELLER SCREW ONLY ON TRI PHASE PUMPS